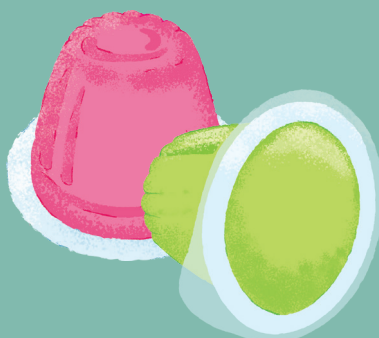
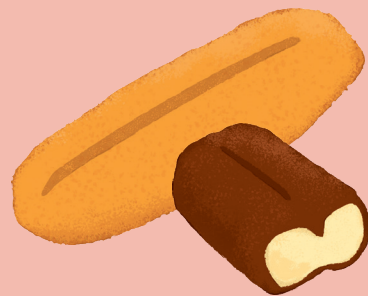


 七尾製菓

# CATALOG

Nanao Confectionery Co., Ltd.



Always Beside You

# Nanao Confectionery

## About us



Nanao Confectionery was established in 1957 and located in Kitakyushu city, Fukuoka. We are the number one producer of wheat flour baked confectionery in Japan. In addition to the wheat flour baked confections that have been produced since the company's founding, we also manufacture various categories of products including sweets, jelly, and doughnuts, as well as cookies. Our products are sold nationwide and all over the world.

## Manufacture of Cookies and Sweets



Making use of the techniques and experience that we have cultivated since our business was established, we manufacture cookies and sweets with a "gentle and simple taste" while appreciating a traditional handmade taste. We make efforts to ensure food safety in all processes, ranging from procurement of raw materials and manufacturing to logistics, and have been complying with our customers' various requests.

## History

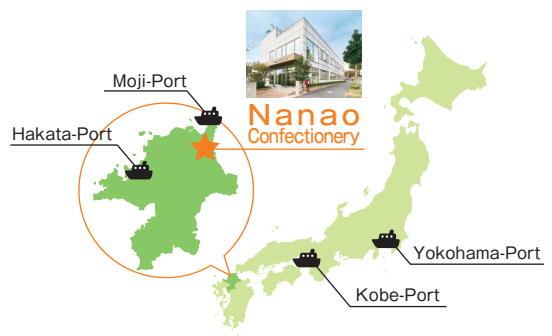
- 1957 — The first president founded a confectionery manufacturing business in Kitakyushu city, Fukuoka.
- 1962 — Began production of French papiro.
- 1977 — Began production of Taiko senbei.
- 1980 — Relocation to a new factory in Kuzuhara.  
\*Current head factory
- 1988 — The Company becomes Nanao Confectionery Co., Ltd.
- 1989 — New factory established.  
\*Current second factory
- 2007 — Nanao celebrates its 50th anniversary.
- 2010 — Eco-System solar panels installed.
- 2017 — Nanao celebrates its 60th anniversary.
- 2019 — Nanao factories obtain JFS-B certification.



Nanao Confectionery obtained the management certification of the Japan Food Safety Standard (JFS-B) based on HACCP.

## Company Profile

Company name Nanao Confectionery Co., Ltd.  
Tel +81 93-472-8770  
URL <https://nanaoseika.co.jp/en/>  
Location 1-9-7 Kuzuhara, Kokura-minami-ku, Kitakyushu city, Fukuoka.  
800-0297 Japan





# PRODUCT LINEUP

## CREAM SANDWICH BISCUIT

### Matcha cream sandwich biscuit

Fluffy cream using Fukuoka Yame matcha (powdered green tea) is sandwiched between wafers.



Volume	6pcs
Shelf life	240days
BDL	10packs×2
Weight/carton	about 1.0kg
Pack Size	180×155×75
Carton Size	310×270×175
JAN	4902156051027

### Vanilla cream sandwich biscuit

Fluffy cream using vanilla beans from Madagascar is sandwiched between wafers.



Volume	6pcs
Shelf life	300days
BDL	10packs×2
Weight/carton	about 1.0kg
Pack Size	180×155×75
Carton Size	310×270×175
JAN	4902156051034

### Strawberry cream sandwich biscuit

Fluffy cream using Amaou strawberry from Fukuoka prefecture (of Japan) is sandwiched between wafers.



Volume	6pcs
Shelf life	300days
BDL	10packs×2
Weight/carton	about 1.0kg
Pack Size	180×155×75
Carton Size	310×270×175
JAN	4902156051010

### Mango cream sandwich biscuit

Fluffy cream using mango from Miyazaki prefecture (of Japan) is sandwiched between wafers.



Volume	6pcs
Shelf life	300days
BDL	10packs×2
Weight/carton	about 1.0kg
Pack Size	180×155×75
Carton Size	310×270×175
JAN	4902156051003



## BAKED SWEETS

### French papiro

This product went on the market in 1962. A roll type crispy biscuit filled with fluffy cream. It also comes in packs of 150g.



Volume	※ 80g
Shelf life	240days
BDL	20packs×2
Weight/carton	about 2.0kg
Pack Size	210×140×30
Carton Size	380×285×155
JAN	4902156072114
	※Include individual packages

### French matcha papiro

A roll type crispy biscuit filled with pleasantly bitter cream made with fragrant Fukuoka Yame matcha (powdered green tea).



Volume	※ 70g
Shelf life	240days
BDL	20packs×2
Weight/carton	about 1.8kg
Pack Size	205×135×30
Carton Size	400×246×147
JAN	4902156072145
	※Include individual packages

### Shoga senbei

This product went on the market in 1957 and is coated with molasses containing grated fresh ginger produced in Kyushu district (of Japan). It also comes in packs of 135g.



Volume	80g
Shelf life	240days
BDL	10packs×4
Weight/carton	about 1.0kg
Pack Size	220×145×30
Carton Size	260×180×165
JAN	4902156072060

### Taiko senbei

This product went on the market in 1978. This is a cookie-like cracker using in-house roasted fragrant peanuts and eggs. It also comes in packs of 4 and 20.



Volume	12pcs
Shelf life	150days
BDL	10packs×3
Weight/carton	about 2.4kg
Pack Size	280×205×44
Carton Size	350×250×187
JAN	4902156000148

### Kawara senbei

This is a cookie-like cracker using in-house roasted fragrant peanuts with a tile-shaped biscuit.



Volume	18pcs
Shelf life	150days
BDL	10packs×2
Weight/carton	about 1.8kg
Pack Size	300×155×28
Carton Size	309×244×155
JAN	4902156072367

### Kawara senbei & Taiko senbei double pack

Enjoy both long-selling products in one pack.



Volume	kawara 15 taiko 10
Shelf life	150days
BDL	10packs
Weight/carton	about 3.2kg
Pack Size	300×200×50
Carton Size	358×268×271
JAN	4902156072374

### Rakka tsuzumi

Okinawan brown sugar biscuit with in-house roasted fragrant peanuts.



Volume	4pcs
Shelf life	120days
BDL	10packs×2
Weight/carton	about 1.4kg
Pack Size	125×100×45
Carton Size	243×203×148
JAN	4902156072282

### Peanut senbei

These bite-sized crackers are made by baking a biscuit topped with freshly roasted peanuts.



Volume	24pcs
Shelf life	120days
BDL	20packs×2
Weight/carton	about 2.0kg
Pack Size	260×155×43
Carton Size	450×275×177
JAN	4902156014305

### Kurogoma senbei

These crackers are baked with rich flavor of black sesame and stone-ground sesame.



Volume	24pcs
Shelf life	120days
BDL	20packs×2
Weight/carton	about 1.5kg
Pack Size	260×155×43
Carton Size	450×275×174
JAN	4902156077324

# DOUGHNUTS

## Karinto doughnut brown sugar

Moist stick doughnuts made with Okinawan brown sugar. It also comes in packs of 18.



Volume	8pcs
Shelf life	90days
BDL	12packs×2
Weight/carton	about 2.1kg
Pack Size	220×120×45
Carton Size	370×198×191
JAN	4902156072404

## Karinto doughnut honey

Moist stick doughnuts made with honey.



Volume	8pcs
Shelf life	90days
BDL	12packs×2
Weight/carton	about 2.1kg
Pack Size	220×120×45
Carton Size	370×198×191
JAN	4902156072411

## Wow! honey doughnut (Bag-type)

A mix of sugared, chocolate coconut and old fashioned mini doughnuts.



Volume	* 90g
Shelf life	75days
BDL	12packs×2
Weight/carton	about 1.2kg
Pack Size	255×155×40
Carton Size	301×204×181
JAN	4902156072381
*Include individual packages	

## Honey doughnut (Box-type)

A mix of sugared and chocolate coconut mini doughnuts.



Volume	* 80g
Shelf life	75days
BDL	12packs×2
Weight/carton	about 1.7kg
Pack Size	100×130×100
Carton Size	316×272×216
JAN	4902156072244
*Include individual packages	

# JELLY

## Niko niko nikkori jelly

Bite-sized fruit jellies, with a selection of five flavors orange, grape, strawberry, melon and pineapple. It also comes in packs of 35.



Volume	16pcs
Shelf life	180days
BDL	20packs
Weight/carton	about 5.9kg
Pack Size	230×155×40
Carton Size	368×275×188
JAN	4902156071605

# HALLOWEEN & CHRISTMAS

## Halloween French papiro

Halloween package with cute individual wrappings. A roll type crispy biscuit filled with fluffy cream.

\*Order Deadline June 30th , shipment from September.



Volume	* 235g
Shelf life	240days
BDL	10packs×2
Weight/carton	about 2.8kg
Pack Size	200×290×50
Carton Size	380×270×240
JAN	4902156072299
*Include individual packages	

## Halloween jelly orange

Halloween package with orange taste jelly.

\*Order Deadline June 30th , shipment from September.



Volume	10pcs
Shelf life	180days
BDL	20packs
Weight/carton	about 3.9kg
Pack Size	185×155×40
Carton Size	368×275×188
JAN	4902156072428

## Christmas French papiro

Christmas package with cute individual wrappings. A roll type crispy biscuit filled with fluffy cream.

\*Order Deadline August 31st.



Volume	* 235g
Shelf life	240days
BDL	10packs×2
Weight/carton	about 2.8kg
Pack Size	200×290×50
Carton Size	380×270×240
JAN	4902156072343
*Include individual packages	

## Holiday jelly strawberry christmas

Christmas package with strawberry taste jelly.

\*Order Deadline August 31st.



Volume	10pcs
Shelf life	180days
BDL	20packs
Weight/carton	about 3.9kg
Pack Size	185×155×40
Carton Size	368×275×188
JAN	4902156072435

# HALAL PRODUCTS

## Sakura senbei

Made from the paste of Japanese cherry blossoms and leaves and has a gentle sweetness that allows you to enjoy the flavor of cherry blossoms.



Volume	50g
Shelf life	360days
BDL	10packs×4
Weight/carton	about 0.7kg
Pack Size	200×100×45
Carton Size	208×163×226
JAN	4902156072015

## Matcha senbei

Using Fukuoka Yame matcha (powdered green tea), the bitterness of matcha is perfectly blended with the sweetness of milk flavor, to create a crispy thin cracker.



Volume	50g
Shelf life	120days
BDL	10packs×4
Weight/carton	about 0.7kg
Pack Size	200×100×45
Carton Size	208×163×226
JAN	4902156072459

Dimensions are length×width×height (mm)

